

FALL 2018

STYLE ■ COMFORT ■ IDEAS ■ REAL ESTATE

our¹homes

W I N D S O R & E S S E X C O U N T Y

2 HOMES

A FEAST FOR THE EYES

DISCOVER
A LOCAL *Artisan*

the
delights
of
FALL

GET HYGGE WITH
OUR STYLE PICKS

TONIC FOR
COFFEE LOVERS



Beautiful landscapes
start with Bellaire Landscape.
Professional results.
Endless possibilities.



Bellaire Landscape has had the honour and pleasure of designing and building extraordinary beautiful landscapes for homes and businesses across the Windsor-Essex County area for over 25 years.

Bellaire Landscape's Customer Satisfaction – Working to Exceed Expectations!

With innovative and creative designs and a detailed implementation process, Bellaire Landscape is your ideal choice for professional landscaping. We work closely with our clients through every step of the landscape design and construction process to ensure that your goals are realized and financial budgets are adhered to.

Our reputation is backed by numerous local and provincial "Landscape Ontario Awards". Landscape creations, by our staff of certified landscape designers who can provide plans and 3D renderings, and skilled landscape installers, provide "YOU" with workmanship, Built-To-Last quality and customer satisfaction.

Our reputation as a respectable, honest and reliable landscape company is of the utmost importance to us. That is why Bellaire Landscape Inc. is a member of Landscape Ontario Horticultural Association, Windsor Construction Association, Better Business Bureau and is fully licensed, bonded and insured. We are also proudly associated with the Authorized Unilock Contractor program, ensuring your landscape installations are completed with top-quality products and guaranteed workmanship.

Our garden centre Essex Landscape Supply is a One-Stop-Shop for all your landscape requirements.

Whether you heard about Bellaire Landscape Inc. through word of mouth, an advertisement, or from our website, we invite every potential customer to come visit us and spend some time discussing your landscaping ideas with our team. We will transform your yard into an oasis.

519.723.4948

www.bellairelandscape.com

landscapeontario.com
Green for Life!

UNILOCK®
Authorized Contractor



Experience the difference.

COULSON
design-build inc.

Award winning designs and outstanding builder workmanship.

custom home builder and designer

519.818.6601 | coulsondesignbuildinc@gmail.com | coulsondesignbuild.com

2019 ASCENT



INTRODUCING MORE SPACE.
MORE POSSIBILITIES.
MORE FAMILY-SIZED FUN.
ARRIVING SUMMER 2018.



Introducing the all-new, three-row 2019 Subaru Ascent. This mid-size SUV features a turbocharged 2.4L SUBARU BOXER engine that creates the power of a 6-cylinder with the efficiency of a 4-cylinder. The groundbreaking Ascent comes standard with an arsenal of advanced safety systems, including EyeSight® Driver Assist Technology. The Subaru Ascent: everything Subaru knows about engineering vehicles and everything you've always wanted in a three-row, family-sized SUV. Visit ontario.subarudealer.ca or your local Subaru Dealer for more information.



Vehicle shown solely for purposes of illustration, and may not be equipped exactly as shown. †See Owner's Manual for complete details on system operation and limitations. Subaru, Ascent, and SUBARU BOXER are registered trademarks. Eyesight® is a registered trademark of Subaru Corporation.

IT'S NOT JUST A WINDOW,
IT'S PEACE OF MIND.



400 SERIES

For over 110 years, people have relied on Andersen. With over 100 million windows installed, no other windows are in more homes than the Andersen® 400 Series. Its innovative blend of craftsmanship and style has helped make Andersen the most trusted and most recommended brand of windows and patio doors among contractors.* **Why choose anything else?**

WINDOWS • DOORS
Andersen® 

*Andersen® and all other marks where denoted are trademarks of Andersen Corporation.
©2018 Andersen Corporation. All rights reserved. MS1806_0369



The
**Planning
Centre**

Featured local home built by Evola Builders.

4535 County Rd. 46
Windsor, ON
519.737.9011
theplanningcentre.ca

Your very own summer retreat
...without the commute.

The
GREAT OUTDOORS
YOUR
BACKYARD **POOL** SPECIALISTS

Pool Installations • Pool Renovations • Liner Replacements • Concrete • Design Concrete

Outdoor Patio Furniture by RATANA & SUNBRELLA • Smokeless Fire Pits by BREEO

Lakeshore - County Rd #42 (just east of Patillo Rd.) 519.727.5959

www.thegreatoutdoorspools.com

Recommended by
Jim Caruk, Master Contractor,
HGTV Host and Editor-in-Chief
of Renovation Contractor Magazine

**DO-IT-YOURSELF
AND SAVE UP TO
20% ON HEATING
& COOLING COSTS***

The Owens Corning™ AttiCat® Expanding Blown-In Insulation System is a quick, easy, safe and reliable system to help you take control of your home's comfort and energy usage.

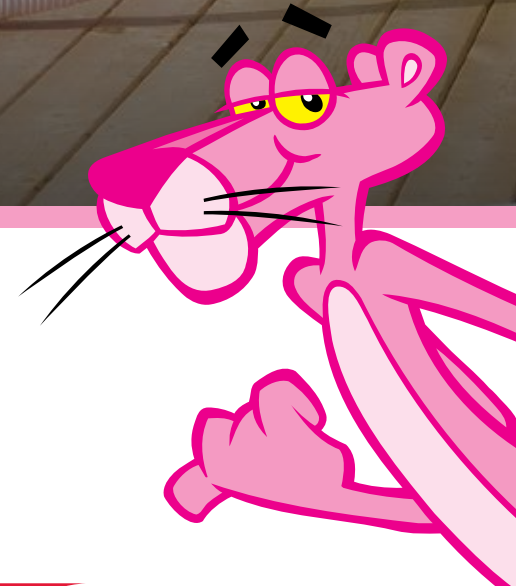
- ✓ **Quick & Easy:** Complete in as little as 2 hours†
- ✓ **Virtually No Settling:** Keeps its energy saving R-value over time
- ✓ **Virtually No Mess:** Releases and expands inside machine for low dust

THE PINK PANTHER™ & © 1964-2017 Metro-Goldwyn-Mayer Studios Inc. All Rights Reserved. The colour PINK is a registered trademark of Owens Corning. © 2017 Owens Corning. All Rights Reserved. *Up to 20% heating and cooling savings based on Hot 2000, Version 8.7 run for a 2 storey 1972 type base house with 1149 sf per floor for an increase from R-8 to R-40 in the attic in Canadian climates. Savings vary depending on original amount of insulation in your home, climate, house size, air leaks, and personal energy use and living habits. †Blowing time, based on attic size 100m²/1000 ft² at RSI 8.8/R-50.



AttiCat
EXPANDING BLOWN-IN
INSULATION SYSTEM

1-800-GET-PINK® or visit owenscorning.ca



Bring the sleek look of glass into your home.



Actual Projects

BAYVIEW
GLASS & MIRROR LTD.

1455 Matthew Brady Windsor ON | info@bayviewglass.com
519.94GLASS (944-5277) | www.BayviewGlass.com

STYLE • COMFORT • IDEAS • REAL ESTATE
ourhomes®
WINDSOR & ESSEX COUNTY

REGIONAL PUBLISHER/FRANCHISE OWNER **Glade Publishing**
Rich Mancini, 519.564.6014
rich.mancini@ourhomes.ca
John Farlinger
john.farlinger@ourhomes.ca

REGIONAL MANAGING EDITOR Nancy Belgue
REGIONAL PRODUCTION MANAGER Kelly Donaldson
MARKETING & ADVERTISING Rich Mancini, 519.564.6014
Elizabeth Fernandez, 519.259.9137

REACH US EASILY: firstname.lastname@ourhomes.ca

OUR HOMES is a registered trademark of OUR HOMES MEDIA GROUP INC.
OUR HOMES Windsor & Essex County is published four times a year by Glade Publishing under the licence of OUR HOMES MEDIA GROUP INC.

OUR HOMES is distributed to residents of Windsor Region via direct mail.
Copies of OUR HOMES are available for free pick up at high traffic locations throughout the region. OUR HOMES is distributed throughout select B&Bs and hotels, Sobeys and to select business leaders via direct mail.

Please send all letters and/or feedback to OUR HOMES Magazine, 12944 Little River Rd., Tecumseh, Ontario, Canada N8N 3B3. Or email us at editor@ourhomes.ca. All letters received are subject to editing for grammar and length.

OUR HOMES MEDIA GROUP INC:

| EDITORIAL | PRODUCTION |
|--|--|
| EDITOR-IN-CHIEF Georgette McCulloch | PRODUCTION DIRECTOR Lynn Derrick |
| ASSOCIATE & WEB EDITOR Laurel Fortin | PRODUCTION MANAGERS Julia Dempsey, Kelly Donaldson, Marilyn Reid, Tracy Shuttleworth |
| MANAGING EDITORS Nancy Belgue, Adrienne Brown, Walter Franczyk, Mary Hatt, Gina Makkar, Sara Martin, Tiffany Mayer, Georgette McCulloch, Tamarisk McNalty Stephens, Melissa North, Merrilyn Patterson, Heather Wright | OPERATIONS MANAGING DIRECTOR, SALES & MARKETING Jamie Jefferson jamie.jefferson@ourhomes.ca |
| ART | MANAGING DIRECTOR, OPERATIONS Georgette McCulloch |
| ACTING ART DIRECTOR Robynne Sangiuliano | CLIENT RETENTION & DISTRIBUTION Lisa Merrell |
| ASSOCIATE ART DIRECTORS Sheila Britton, Michelle Losier | ACCOUNTING Tyler Annette |
| DIRECTOR OF PHOTOGRAPHY Jason Hartog | ACCOUNTS RECEIVABLE Cindie Tonon |

CONTRIBUTORS

Nancy Belgue, Jenelle McCulloch, Dolores Pian, Steve Pomerleau, Melanie Rekola, Yanic Simard, Cynthia Soda, Max Wedge

Advertisements and the content, including photos, of advertisements published within OUR HOMES magazine are supplied solely by the advertiser and neither the publisher nor OUR HOMES Media Group Inc. accept responsibility for opinions expressed in advertisements or for copyright issues with regards to photos, advertising copy and advertisements, nor shall they be held liable thereby. By act of reading this publication, all advertisers and readers agree to indemnify and hold harmless both OUR HOMES Media Group Inc., and the publisher thereby. Copyright ©2018 OUR HOMES Media Group Inc. All rights reserved. Reproduction without permission is prohibited.

OUR HOMES CAN BE FOUND IN THE FOLLOWING MARKETS:

- Barrie/Orillia/Midland • Grey Bruce • Hamilton • London • Muskoka
- Niagara • Oakville/Burlington/Mississauga • Ottawa • Peterborough
- Southern Georgian Bay • Toronto & York Region • Region of Waterloo
- Wellington County/Orangeville/Caledon • Windsor



RICH COLOUR THAT STAYS TRUE OVER TIME.

Find expert service and every colour you can imagine at your locally owned Benjamin Moore® retailer.

Decorating Ideas 3059 Dougall Ave
519.966.7102 | decoratingideaspaintstore.com

Manz Décor 8015 Wyandotte St E
519.945.8002 | manzdecor.com



©2018 Benjamin Moore & Co., Limited. Aura, Benjamin Moore, Paint like no other, and the triangle "M" symbol are registered trademarks and Colour Lock is a trademark of Benjamin Moore & Co., Limited.

Let us bring the store to your door...
we measure, we install, we do it all!



Buy factory direct and save \$
519-739-9797
www.madetoshade.ca

LIFESTYLE BY DESIGN




ADG ARCHITECTS INC.
RESIDENTIAL DESIGN CONSULTANT

Allan Djordjevic
248.495.6614

editor's note



FOR ME, AUTUMN PLEASURES INCLUDE A GLOWING FIRE, candlelight, warm baths and red wine. But they also include outdoor magic: owls calling mysteriously from a tree branch outside a softly

lit window; jewel-toned leaves carpeting the ground; a yellow globe hanging high in the sky.

Autumn is the year's most sensuous season. Everywhere you look nature outdoes herself. The earth smells nutty, bonfire smoke tickles the nose, skies are tinted with amber, pewter and rose. Pumpkins, squash and sunflowers dot front porches. You can watch your neighbours around their kitchen tables when they forget to pull their curtains and you can imagine how their conversations are stitched with the delightfully mundane things that comprise family life. The things that will tug at their heartstrings when, years later, those very children sitting now on their parents' knees will gather around the table with families of their own. They'll remember grandad telling the story of the legend of Sleepy Hollow and try to duplicate his spine-tingling rendition. Grandad may no longer be with them, but his memory and his spirit will long have a place at their table.

Autumn is a time of reflection, a time of nostalgia, of delicious longing induced by early darkness and gathering cold. It is a time when people come together to ward off the darkness, to celebrate the warmth of human connection. Maybe that's why lots of babies are conceived in the autumn. (Both of mine certainly were). So remember its magic when you and your loved one go dancing under this harvest moon!

Maybe you, like me, will sit instead on your lawn, bundled in a blanket and watch the stars. Or read a book about escaping to Paris. I want to dream my way into autumn, to revel in the longer nights, the crisper air. To drink it in, drink it in.

Salut!

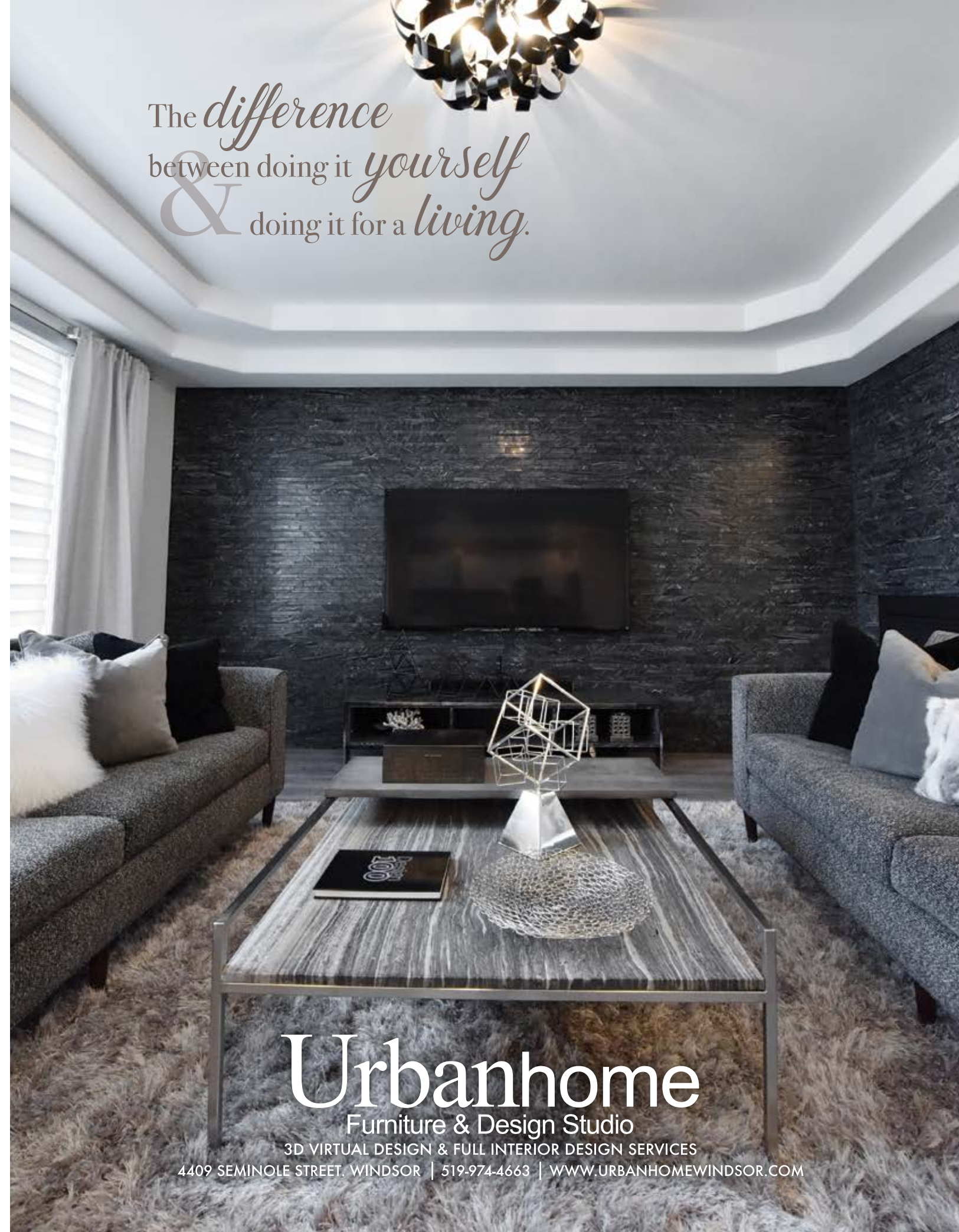
Nancy

Nancy Belgie, Managing Editor
nancy.belgie@ourhomes.ca

Follow us    Subscriptions subscribe@ourhomes.ca

online Get more at ourhomes.ca

The *difference*
between doing it *yourself*
& doing it for a *living*.



Urbanhome
Furniture & Design Studio

3D VIRTUAL DESIGN & FULL INTERIOR DESIGN SERVICES

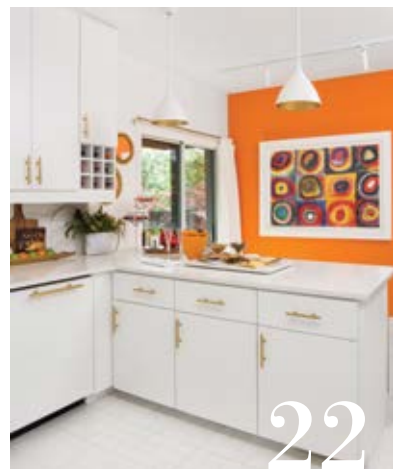
4409 SEMINOLE STREET, WINDSOR | 519-974-4663 | WWW.URBANHOMEWINDSOR.COM

CONTENTS

FALL 2018



54



22



38

ON THE COVER

Jewel box townhouse in Walkerville. Story, page 22.
Photography by Max Wedge.



30

18



LOCAL FEATURES

- 18 Style Picks** Get that comfy hygge feeling in your home.
- 22 Feature Home** A Walkerville townhouse with big attitude.
- 30 Spotlight** Organic meets high tech with FLO Hardwoods.
- 38 Home & Builder** A retirement home that ticks all the boxes.
- 50 People** Experts in their fields tell us what's in store for 2019.

DEPARTMENTS

- 10 Editor's Note**
- 16 Advice** Counter Intuitive
- 34 Decorating** Tub Talk
- 48 Gardening** Get Your Glow On
- 54 Good Taste** Crazy For Coffee
- 56 Design Ideas** 10 Ways To Live Large
- 60 Home Resource Directory**
- 62 Finishing Touch** Sofa So Good

better living through design



functional simple contemporary inspiring sophisticated classical

FRANK
CREMASCO
FINE CABINETRY

FRANK CREMASCO CABINETS | 755 MORTON DRIVE | WINDSOR | 519.734.8289

www.cremascocabinets.com



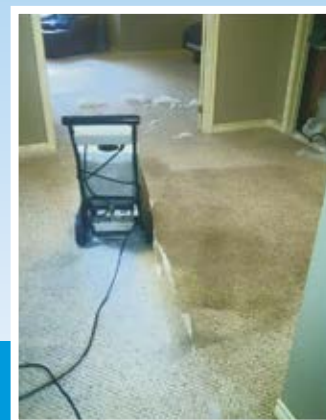
TILE & GROUT CLEANING & COLOUR SEALING

Celebrating
17 years
ANNIVERSARY
in business!

Change The Colour Of Your Grout

**FREE
DEMO!**

We Clean Tile & Grout Better Than Anyone Else...Guaranteed!



DRY FOAM CARPET CLEANING

- Fast Drying & Deep Cleaning
- Carpet & Upholstery
- Area Rugs • Mattresses

Call for a **FREE**
no-obligation estimate

519-966-0700



Visit our website for more
photos and information
www.thenulook.ca

COLOUR SEALING

Seal grout lines - it adds super protective coating. Ideal for grout lines that are not cleanable or have become discoloured. Available in any colour.

- Shower Restoration
- Full Cleaning • Resealing
- Grout Repair • Re-caulking
- Full Removal & Re-grouting

CLEAN & RESEAL

All natural stone and manmade tiles

- SHOWERS
- COUNTER TOPS
- ALL FLOORS

LEATHER FURNITURE

REPAIR • RE-DYEING • REPLACEMENT

- Full Colour Change
- Repair Wear & Tear, Pet Damage, Ink Marks, Nail Polish, Stains, Fading and more!

Part replacement on-site repair is available. Full upholstery, 150 different leathers to choose from.



NULOOK
Cleaning & Repair Specialists

Bertoni
CHAIRS AND THINGS

Endless Possibilities
Custom Contemporary Furniture

301 EDINBOROUGH ST.
WINDSOR, ONTARIO
519-966-1280
www.bertonichairs.com

SEASONAL RESORT LIVING

Discover the superior quality and innovative design of handcrafted, boutique-style park model cottages.

519.728.3434 ext.4 | 1023 County Road 2, Belle River, ON | info@innovativelifestyles.com

INNOVATIVE LIFESCAPES
DESIGN • BUILD • LIVE



COUNTERTOP PERPLEXITY

Interior Designer **Dolores Pian** shares her ideas.

Planning a new kitchen or bathroom? Confused by the many counter choices? Have you gone from enthused to confused? Let's see if we can clear up your countertop perplexity.

WHAT IS YOUR COUNTERTOP PERSONALITY?

What kind of surface fits your lifestyle? Is it easy to maintain? What is your budget? Digging deep into these questions will get you closer to the right solution for you.

POPULAR CHOICES

While there are a variety of materials, we'll review the most popular choices:

NATURAL STONE: Including granite, marble and soapstone. Stone is mined from the earth. Granite is granular with sparkle. Marble has its flamboyant veining while soapstone has a matte finish and old-world charm. Granite and marble are porous and must be sealed regularly to prevent staining and moisture retention. Soapstone feels soft but is durable and doesn't stain. It should be sealed with mineral oil.

MAN MADE: As seen in plastic laminate, quartz and large format ceramic tile.

Plastic laminate is perfect for the budget conscious. Known under brand names such as Arborite, Formica or Wilson Art, it is hard plastic sheeting

glued to plywood. It comes in a variety of designs from plain to fanciful. Sinks and faucets must over mount and have a water-tight seal, otherwise water will leak and will warp or rot the plywood. The edging and backsplash can be made in one piece. Countertops are available from most fabricators and large box hardware stores.

Quartz is a mix of natural quartz, resins and colouring agents. Common brands include Cambria, Corian Quartz, Ceasarstone and Silestone. They can imitate the pattern of stone or come in various colours to reflect your unique décor. It is non-porous, does not require a sealant and is low maintenance. Since it is a resin mix, you cannot put a hot pot directly on the counter. You must use a trivet.

Large format tiles are non-porous, ceramic-slab tiles. Brands such as Laminam by Stone Tile come in a standard size of 64-by-128 and a half-inch thick.

MATTE OR SHINY FINISH

Shiny surfaces can cause extreme glare and eye strain and because of that, matte surfaces are gaining in popularity. Historically, designers have been big fans of matte surfaces for a soft, sophisticated look that minimizes fingerprints and smudges.

COST

Costs for counters can vary wildly. With quartz in particular, cost is affected by the



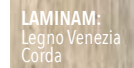
CAMBRIA: Clareanne Matte



CAMBRIA: Skara Brae



LAMINAM: Calce Antracite



LAMINAM: Legno Venezia Corda

quality of the quartz stone being used, the method of manufacturing (some use fillers such as sand), country of origin and photo reproduction quality of the pattern. Ask for a specification sheet outlining all the ingredients to know what you are buying.

Other expenses include installation fees, location of the project, thickness of material, edge details and the number of cut-outs required. Generally, 90 per cent of your cost is designated to labour and 10 per cent to raw material.

Large format tiles are comparable to quartz. Granite, marble, soapstone and basic quartz are now similar in price.

FOOD SAFETY

When preparing food on counters, always use a separate cutting board and clean up with a mixture of vinegar and water to disinfect the counter.

NEW AND NOTABLE

DuPont's Corian is now offering a charging surface that can power up your devices wirelessly. A transmitter is embedded under the counter. Just plug a charging ring into your device, place it on the counter and recharge your battery.



DUPONT CORIAN: Charging Surface

Durability, Value and Lifelong Good Looks...



FLAIR COLLECTION

THE BEAUTY OF MATTE FINISH



NATURAL COLLECTION

NATURAL RICHNESS OF WOOD



SWEET MEMORIES COLLECTION

FLOORS WITH CHARACTER



EXOTIC COLLECTION

WOOD FROM AROUND THE WORLD



Hardwood Floors available at



Since 1960

3636 Walker Road, Windsor
519-969-3941
www.palazzibros.com

porcelain tile | hardwood | granite & quartz countertops



1

Give your home hygge

Fall is all about getting your cosy on. Do it in style with these great finds.

STORY **NANCY BELGUE**
PHOTOGRAPHY **MAX WEDGE**



2



3

1 FOREST GLADE FIREPLACES

Napoleon Gas Fireplace
With the substantial look of the log insert in this Napoleon fireplace it won't be a stretch to imagine you're in an alpine lodge with snow falling softly outside. With too many features to count, this gorgeous fireplace will up the cosy ante wherever you are.
11400 Tecumseh Rd. E., Windsor | 519.735.2229
107 Erie St. N., Leamington | 519.326.8585
forestgladefireplaces.com

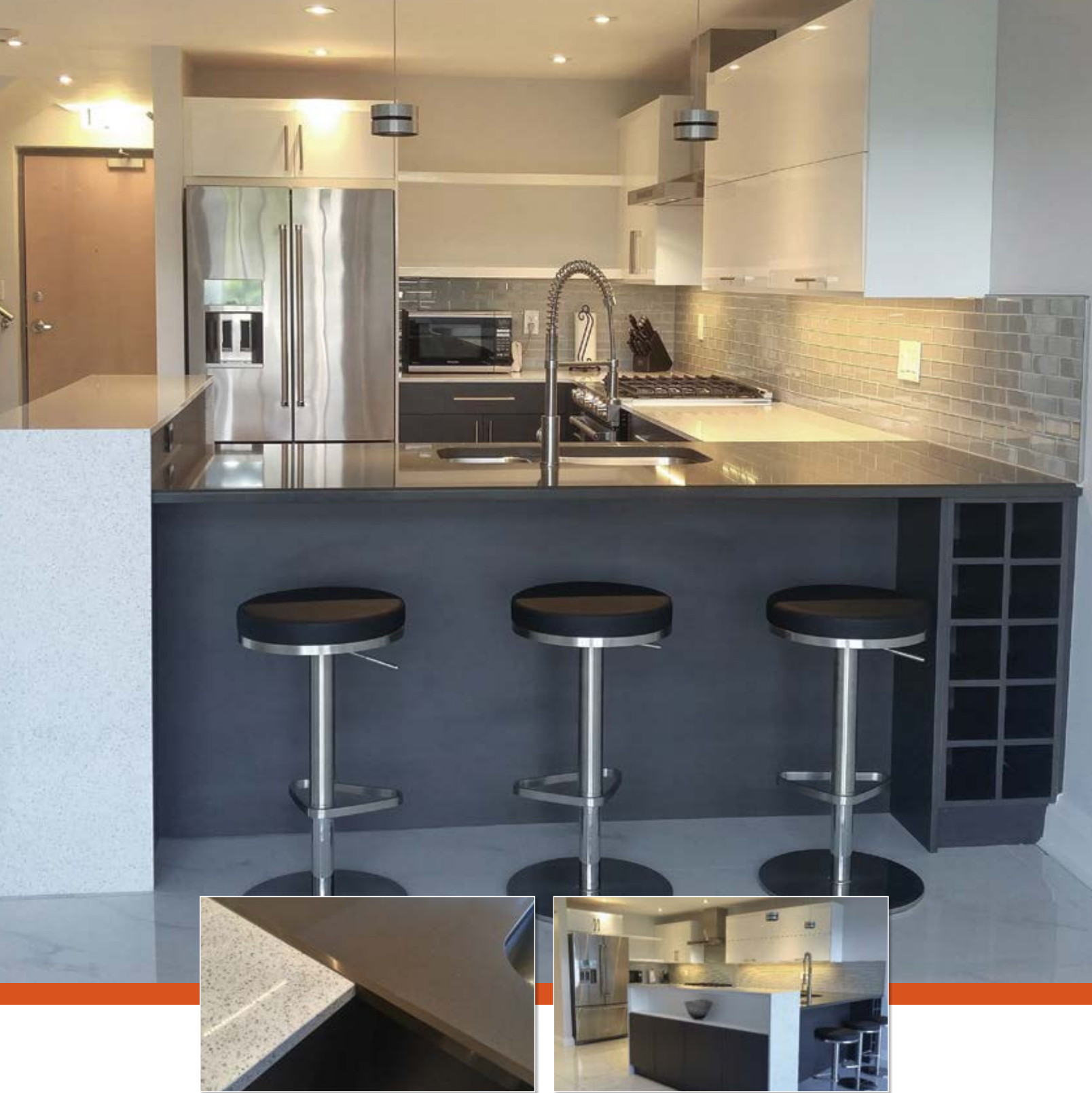
2 BERTONI CHAIRS & THINGS

Nest Chair
Fall nights are made for reading and this Stylus Canadian-made chair completely lives up to its name. You feel completely safe when you sit in it. It can be customized to any colour or fabric you want, but the Royale Ruby couldn't be more perfect for crisp, cool evenings in front of the fire.
301 Edinborough St., Windsor
519.966.1280 | bertonichairs.com

3 PALAZZI RUGS & CARPETS

Hand-Knotted Area Rug
Incomparable craftsmanship makes this hand-knotted, vegetable-dyed, all-wool area rug a piece of art for your floor. Sink into the warmth of the colours, enjoy the intricate pattern (derived from the traditional saddlebags worn by desert camels) and congratulate yourself on making a purchase that will last for generations.
3616 Walker Rd., Windsor
519.972.7174 | palazzirugs.com

Continued on page 20



Masters of Distinctive Cabinetry



2863 Howard Ave., Windsor 519.250.6336 mastrokitchenstudio.com





4



5



6

4 **ANGILERI KITCHEN & BATH**

Soaker Tub
A warm bath on a cool night is one of life's cosiest pleasures. Light a candle, pour a glass of wine and stretch out in luxury as darkness falls outside. One could argue that this Maxx tub isn't an indulgence. It's a necessity.
1825 Manning Rd., Tecumseh
519.979.7666 | angilerikitchenandbath.com

5 **BEDDAZZLE BEDROOM AND BATHROOM STUDIO**

Plush Robe
Climb out of bed or the bath and wrap yourself in ultra-soft luxury. This ribbed robe is so cosy you'll never want to be without it. Good thing it's perfectly squishable for easy packing.
13158 Tecumseh Rd. E., Windsor
519.735.3435

6 **LIONHEART HOME COLLECTION**

Equine Art
This sophisticated photography piece is back-printed on plexi glass for a crisp, modern aesthetic. Amazing detail, and a dramatic scale (60-by-40-inches) makes an elegant statement.
220 Edinborough St., Windsor
519.258.2954 | lionheartcollection.com OH

Welcome home.

Celebrating *19 years* of limitless possibilities.

LIONHEART
home
COLLECTION

220 EDINBOROUGH ST | LIONHEARTCOLLECTION.COM

Richard Pursel
Design Professional

Trust our **75 years** of

Experience & Integrity to make the right decision.



MARTINDALE
WINDOW & DOOR
The windows used by better builders.

2895 Kew Drive, Windsor | 519-944-8111 | 1-800-298-0832 | martindalewindow.com



***THE ART OF
SELF EXPRESSION***

STORY **NANCY BELGUE**
PHOTOGRAPHY **MAX WEDGE**



The leafy streets of Walkerville are home to some of Windsor's most stately and historic residences. And the latest chapter in one of the Romanesque revival townhomes built by Hiram Walker for the managers who worked at his distillery would captivate its previous inhabitants. Under the careful and creative stewardship of current owner, Jayne Lesansky, the red brick house literally glows with charm, colour and personality.

Continued on page 24



THIS PAGE: The landscaping by The Bloomin' Gardener makes the exterior living as beautiful as the interior. Each of the multiple sitting areas offers a different experience. **OPPOSITE:** The charming townhouse dates to the 1880s and once housed Hiram Walker executives.

LEFT: The front door is painted a perfect shade of French blue.
RIGHT: Homeowner Jayne Lesansky (centre) with Megan Cooper and Melissa Woodrow of Lionheart Home Collection. **OPPOSITE:** The sitting area is a feast for the eyes.



Jayne grew up in South Windsor but was always drawn to Walkerville's ambience. "My wedding was one of the first to be held at Willistead," she recalls. "And over the years I spent many weekends at Art in the Park. The neighbourhood has always called to me."

A decorating enthusiast, Jayne renovated and decorated several homes before acquiring the beguiling corner property on Devonshire Road. She originally purchased the house next door and, working with **Megan Cooper** and **Melissa Woodrow** from **Lionheart Home Collection**, she set about putting her own stamp on the heritage property. As fate would have it, however, a welcome-to-the-neighbourhood call from the woman across the street had Jayne changing directions more quickly than she could have imagined. "My neighbour arrived with a bottle of wine and we realized we had gone to high school at the same time," Jayne says. When she and her husband decided to move I knew I had to buy their place."

In less than a year, Jayne sold the original larger home, moved into the 1,800 sq. ft. semi and began working her magic. Decorating for Jayne is an avocation. She is a creative savant – with a true sense of original style. Nothing in her home is cookie cutter – from the framed Picasso and Kandinsky print silk scarves, to the bright orange wall and the wallpapered closets.

The house's overwhelming charm begins with its French blue front door and artful plantings. Just to the left of the entryway, the sitting area overlooks the street and is furnished with a pair of antique "Mr. and Mrs. chairs" that Jayne discovered in her local antique shop **Cow Sang Row Studio** and had reupholstered and painted by Lionheart. Two additional tub chairs (Lionheart) upholstered in distressed orange suede form a cosy grouping that invites conversation – as does the art that adorns every space. The gold and white sculptural eggs that accent one wall of the sitting area are one of Lionheart's

Continued on page 27



*"I ALWAYS TRY
AND BRING
COLOUR INTO MY
HOMES."*

**REPLACING THE HARDWARE
IN THE KITCHEN PROVIDED
AN IMMEDIATE UPDATE TO
THE 80s CABINETRY.**

The popsicle orange wall and pop art may give the kitchen a definite personality but the crisp white colour scheme provides the perfect backdrop. The new, brushed-gold hardware (Joe's Woodcraft of Windsor Ltd.) provided an immediate update. The fridge and dishwasher are from the Lighting Boutique and Appliance Shoppe. Gold faucets are from Windsor Factory Supply (WFS Ltd.). The quartz backsplash is from Granite Design Works.

favourite pieces and one that Jayne “truly appreciated,” says Megan.

The formal living area switches tone from sublimely witty to slightly more elegant. The round sunburst gold-toned mirror, the tufted cushions and the black and white colour scheme are refined yet fun. The wool animal print area rug is a unifying element, tying in the natural hide rug in the sitting area. The sofa is upholstered in a white linen fabric with arresting black and cream herringbone inlays.

In the dining room, a bold black and white striped pearled wallpaper takes centre stage. “I normally know that Jayne will do something unusual and bold,” laughs Megan. “And she outdid herself in this house. Everywhere you look there is something amazing to see.”

The kitchen is primarily white. “I needed to do very little in here,” Jayne says. “These are the existing cabinets from the 80s. I just updated them with new brass hardware, and had **Frank Cremasco of Cremasco Fine Cabinetry** custom build a display cabinet where an alcove used to be, as well

as cabinetry to camouflage the refrigerator.” But true to form, Jayne painted one wall in a fresh shade of orange sherbet after she saw an orange vase she loved at Lionheart, “The kitchen was inspired by a vase and a Hermès box,” she laughs. The popsicle wall is further jazzed up by a gloriously cheerful painting that puts the “pow” in powerful – which is the best way to describe the colour’s impact. “I don’t know why people don’t venture away from beige,” Jayne says with a smile. “When you look in nature there are colours and flowers everywhere. So why live in a house that has no colour? I always try to bring colour into my homes.”

The house has three floors and ceilings that slope dramatically in the upstairs bedrooms. Jayne has transformed the exposed brick of the staircase wall into an eclectic gallery that showcases her carefully curated art collection. Many of her pieces were acquired from local artists during Art in the Park. Some were brought back from her travels. Some were picked up from street artists in New York.

Continued on page 28



The living room is a mix of antique and new accessories. A leather bench from Lionheart serves as a coffee table. The numbered giclée is by Persian artist Hessam Abrishami. **ABOVE:** The coral-like light fixture from Arteriors and the gold and black latticework chairs are available through Lionheart. The collection on the table comprises green gold and turquoise pieces from Jonathan Adler and a Girl of the Sea sculpture from Lionheart.



feature



LEFT: At first the homeowner didn't know what to do with this tiny room under the eaves. "I had a vision that came to me to make it a sitting room," she says. "I searched high and low to find a chaise long enough and I found it at Essex Home Furnishings." Nesting tables are from Cow Sang Row Studio. **BELOW:** The exposed bricks of the staircase serve as a gallery wall for the many treasures the homeowner has collected on her travels. **BOTTOM:** Master bedroom bedding is from Beddazzle Bedroom and Bathroom Studio. Framed note cards from Greece hang over the windows. The matelassé-covered chaise is from Lionheart as is the Australian lambswool sheepskin rug.



The file of lost love letters came with the home and will be passed on from one homeowner to the next.

She sees artistic possibilities everywhere and has framed everything from silk scarves to shopping bags. "I work with **International Art Designs** in LaSalle for the framing," Jayne says. "They do an absolutely amazing job and sometimes the frame is what absolutely makes the art. The Kandinsky scarf in the dining room is a good example of how we worked together to come up with a beautiful presentation."

Jayne's bedroom is exquisitely calm. "I knew I wanted to do cream and black," she says. "I went to Lionheart and told them I wanted a padded cream headboard and a black accent wall. I had the gorgeous flower wall sculpture and wondered if it would work as our jumping off point."

In a house that's filled with so much history, it isn't surprising that it also contains a few surprises of its own. When Jayne moved in, the previous owners handed her a folder of love letters that were discovered in the house. Written in beautiful penmanship with slightly fading fountain pen ink, the letters speak of an illicit love affair, and, according to Jayne, will always "stay with the house."

Come autumn, Jayne plans to gather her friends together to celebrate the home's history, contemplate its long-gone lovers and toast her long held desire to come home to Walkerville. **OH**



Transition
to Betterness
www.t2b.ca

BECOME A T2B VOLUNTEER!

T2B is looking for compassionate and dedicated individuals to help us assist in the day-to-day needs of patients and their loved ones.

VOLUNTEERING IN OUR LOCAL COMMUNITY IS A GREAT WAY TO "GIVE WHERE YOU LIVE" AND MEET NEW PEOPLE.

If you or someone you know are interested in volunteering, please contact T2B's Volunteer & Program Coordinator:

Samantha Arpino
samantha@t2b.ca | 519-944-5143 x2



#T2B
#GiveWhereYouLive



OUR NEW COLLECTION IS
READY FOR ITS DEBUT...

25% OFF
STOREWIDE

ENDS OCTOBER 27th

LIONHEART
home
COLLECTION

220 Edinborough Street
519.258.2954
lionheartcollection.com



TOLMIE FINANCIAL GROUP

Insurance and Investment Planning
11505 Tecumseh Rd E.
Windsor, ON, N8N 1L8
519.258.5510 | tolmiefinancial@cogeco.net
www.tolmiefinancialgroup.com

Investment Strategies
Retirement Planning
Estate Planning

Life & Disability Insurance
Critical Illness Protection
Education Savings

Dan Tolmie
Insurance Representative

Jake Tolmie
Insurance Representative

STORY **NANCY BELGUE**
PHOTOGRAPHY **STEVE POMERLEAU**

GO WITH *THE FLO*



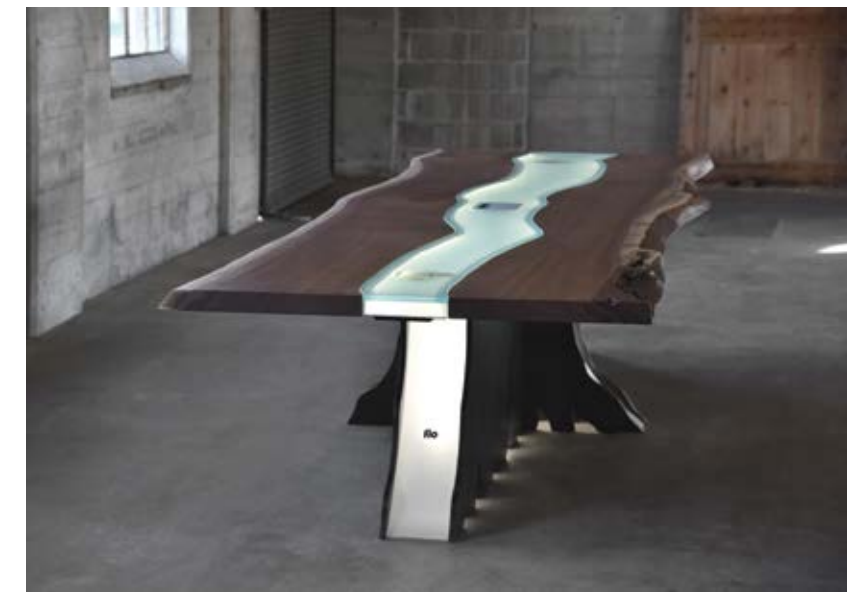
Owners Steve Pomerleau and Tom Mailloux.

THE PLACE: Founded by Steve Pomerleau in 2013, **FLO Hardwoods** specializes in one-of-a-kind, custom-made tables and home furnishings. The focus of FLO Hardwoods is the salvage and reclamation of sustainably sourced or “end of life” raw materials in the form of trees and logs from Essex County and the surrounding areas. From salvage to finish, the entire process is carefully documented with photos and videos to tell the entire story of every piece that leaves the shop. Distinct and unique design, proper material preparation (years of air drying), top grade professional finishing and attention to every detail are what set these exceptional products apart.



THE STYLE: Clean, modern and unique design is the key focus of FLO Hardwoods custom products. They strive to create timeless works of functional art, while using modern materials and techniques. Live-edge hardwood slabs are the key element in their products, but are usually accompanied by materials such as resin (epoxy), metal, glass and mirror plus LED lighting.

WHAT'S HOT/NEW: Live-edge tables with resin accents and the incorporation of LED lighting are one of the fastest growing trends for 2018. Furniture as art is a new attitude. When a piece of furniture becomes the focus of a room by mixing form and function the space shines.



FAVOURITES: Tree root bases and crown tables – where a branch splits into smaller branches – are exciting to create and provide a unique engineering challenge. Oftentimes, due to the size and weight of the base, the structure can hold large and cantilevered sheets of glass so the base is fully visible from all angles. But it's difficult to choose a favourite. FLO Hardwoods' creations cover a wide range of useful, beautiful items – from dining tables to boardroom tables, coffee tables, entry, side and sofa tables, fireplace mantels, benches, lighting fixtures and wall art. The best thing to do is set up a time to come and see their work. Amazement guaranteed.

GET THERE: 44 Sinasac St. W., Harrow
(by appointment only)
519.819.0478 | flohardwoods.com **OH**

IT ALL BEGINS
WITH A
CONVERSATION



TIMBERLAND
HOMES

EST. 1996

#YOURHOMEYOURSTORY
WWW.TIMBERLANDHOMES.CA

Rub a Dub Dub

CHOOSING THE RIGHT TUB



VICTORIA + ALBERT: Vetralla 2
Freestanding Tub in Gloss Black

I am a huge fan of the showering experience. However, when I was expecting my first child and suffering shin splints, I found a soothing bath something I couldn't get through the night without. When you need to get clean quick, a shower is hands-down the way to go. If, however, you find yourself with more than a few minutes, running yourself a bath can be a rewarding and comforting personal experience. Picking the right tub for you is important.

Continued on page 36



STORY **CYNTHIA SODA**



2552 Howard Avenue | Windsor | Ontario | 519.977.6678 | fabucabinetry.com

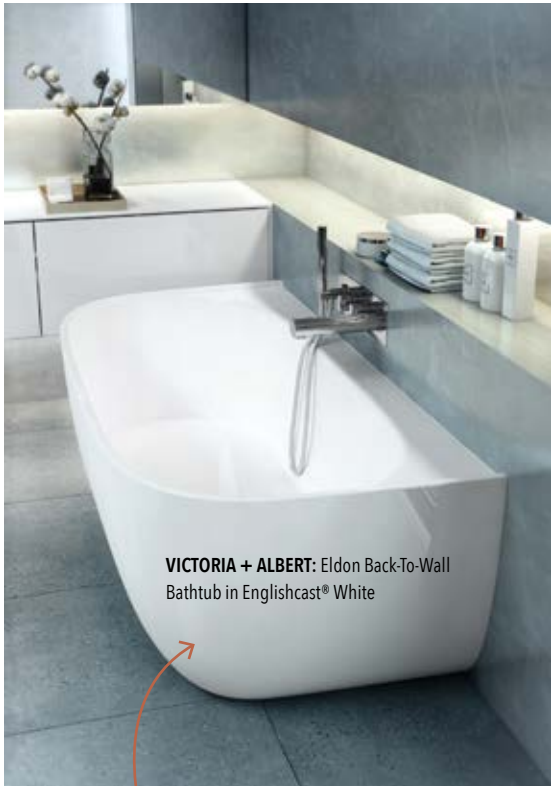
CORP.

STYLES

Bathtub manufacturers today offer a large assortment of styles, shapes and design features to coordinate with any taste and budget. While the most popular pin-worthy tubs are typically vessel freestanding or claw-foot, there are a multitude of options available to suit your needs. For those with limited square footage, a tub-shower combination or three-wall alcove design would be the most common tub style to maximize space. In standard-built homes, we've all seen the drop-in tub, made of enamel-coated cast iron, that sits fitted inside a framed enclosure. A more seamless alternative to the drop-in would be an undermount tub, which essentially is the same concept as an undermount vanity sink, only for your bathing pleasure.

FAVOURITES

One great resource is Victoria + Albert with tubs crafted from the brand's signature Englishcast composition, a unique blend of a naturally white material that is rich in volcanic limestone and high-performance resins, hand-finished to create a glossy white coating with excellent stain resistance. They also offer a choice of trending colour options. Since the material is solid all the way through, internal scratches simply polish away. In our latest bathroom remodel, I can personally speak for the quality of a Victoria + Albert tub. For us, with four little ones who enjoy splashing around in mom and dad's bathroom, the Eldon tub was the perfect fit. Wanting to have luxe European-modern style and not having to worry about clean up behind the tub was the dilemma. The Eldon appears completely freestanding from the front, but its back-to-wall design makes it perfect for busy families with style.



VICTORIA + ALBERT: Eldon Back-To-Wall Bathtub in Englishcast® White



NATIVE TRAILS: Avalon 62 NativeStone Freestanding Soaking Tub in Ash

NATIVE TRAILS: Santorini Freestanding Copper Soaking Bathtub in Polished Copper

The best of both worlds. Get the modern style of a freestanding vessel tub, with the practicality of an enclosed tub.

BELLS & WHISTLES

A quiet soak is not the only appeal of the tub experience so some amenities may be important to research. Jets, in-line heaters, chromatherapy, music, air-only jets, or sit in your very own champagne and soak with micro-bubble effervescent jets.

TEST DRIVE IT

Not all bathtubs are created equal. Depending on the features you choose, prices range from the hundreds to the tens of thousands. One of the most important things you can do as a consumer is take a test drive – that's right, go and physically sit in the tub you plan to invest in to make sure you like the fit and depth. After all, the bathtub can be more than just a beautiful piece of sculpture in your bathroom, you can, you know, use it. **OH**

Affordable Elegance

Make the right call...519.979.7666
Get inspired & see how wonderful your space can be.



ANGILERI
Kitchen & Bath

Visit our showroom
1825 Manning Rd. Tecumseh
Mon - Fri 9:00 - 6:00 Saturday 9:00 - 3:00
angilerikitchenandbath.com

INTERIORS BY
HOUSEWEARS

INSPIRED DESIGN SINCE 2004



Actual Project
Residential wine cellar

Visit our website to view our latest projects
and read our clients' testimonials.

www.housewears.ca 519.735.4003

So many options for your custom design.



SEATON
SUNROOMS

4600 Rhodes Drive, Windsor, ON 519-944-6006 seatonsunrooms.com

Come in today to discuss your vision.
Let the Sunshine in your Life!

A TEAM COME TRUE

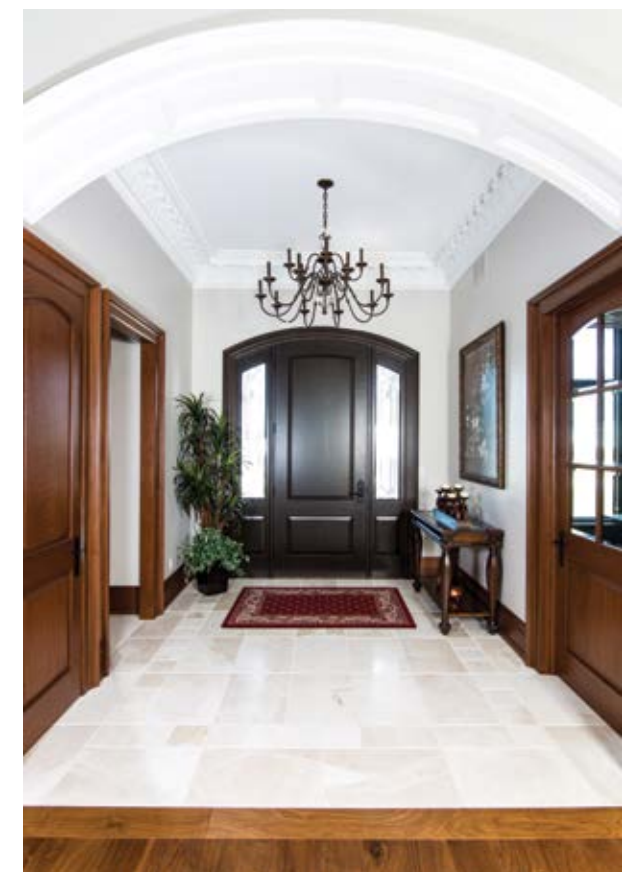
STORY **NANCY BELGUE**
PHOTOGRAPHY **MAX WEDGE**



Tudor-style limestone details highlight the entrance and the exquisite Loewen leaded glass windows. The company commissioned an artisan to hand-make the glass. The tumbled Halquist Stone is from Wisconsin. **BELOW:** The traditional, solid wood, nine-foot front door is Accoya wood from Brazil. It won't warp and will withstand extremes of temperatures. **OPPOSITE:** The team: Phil Fernandes of Philip Fernandes Custom Residential Design, Steve Tiedeman of Tiedeman Construction, Dave Cartier of APW Custom Home Theatres and Dean Coghill of Coghill Construction & Woodworking.

This is a story of a couple that wanted to build a home they could expect to live in for the rest of their lives. Their clearly stated goals included an open-concept plan that had all the amenities on one floor (with a separate apartment in the lower level to accommodate live-in help should the need ever arise) and easy-maintenance landscaping. With care and deliberation, the homeowners, who oversaw every step of the project, set about assembling the perfect team. It is their wish that this story is dedicated to the team.

Continued on page 40

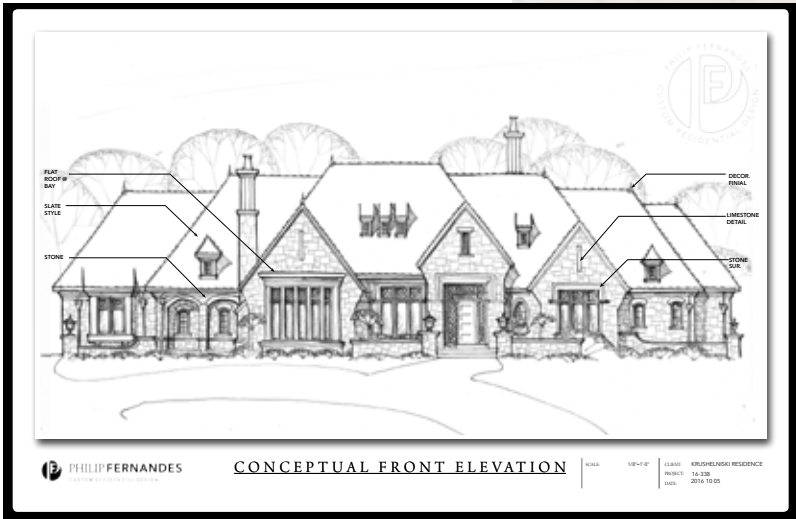


THE DESIGN

After interviewing three architectural designers, the couple commissioned **Phil Fernandes** of **Philip Fernandes Custom Residential Design** to create a design and draw up their plans. “They wanted a grand ranch,” Phil says, pulling up his original hand-drawn concept on his phone. “And it’s very rewarding to come to a house when it’s done and see that the design has been followed so exactly that it looks like that first initial sketch. It makes me feel like I understood the client right away and that our communication worked well.” Once the elevation was approved, Phil tweaked the floor plan and created construction drawings. “Sometimes it’s back and forth a few times,” Phil says of the process, but when the original design is agreed on, the rest is smooth sailing.

“Phil came highly recommended,” say the homeowners. “We chose him based on research of previous homes he designed. We were very impressed with his work. After meeting with him, we appreciated his knowledge, guidance and expertise in designing our home.”

This hand-drawn rendering shows how closely the finished product resembles Phil Fernandes’s original concept.



“When you’ve got good trades, it comes out in the results. No corners were cut on this job.”

THE BUILDER

The next step was to hire a builder. **Dean Coghill** of **Coghill Construction & Woodworking** also came highly recommended and more than lived up to his reputation. “Dean was our full-time manager on site,” say the couple. “He was here every day with a hammer and his three guys and they managed the project from beginning to end. They did everything from the footings to the roofing to the fine finishing work. They were just absolutely awesome.”

“This house was a major undertaking,” says Dean. “And for a project of this magnitude we partnered with **Tiedeman Construction** (something both companies plan to do more of in the future). We combined forces to get the manpower together for a project of this size. This home is something we are totally proud of. Much of what went into this home can’t be purchased in a lumberyard. We had to custom

build a lot of it. It is very rewarding to work on a project that allows all our trades to use our skills to the fullest. The house was done in 15-and-a-half months, which is rare for a build with this much detail. The credit goes to the trades. When you’ve got good trades, it comes out in the results. No corners were cut on this job. Plus, the homeowners are just excellent people and a joy to work with.”

Kitchen cabinets are by GCW Custom Kitchens & Cabinetry Inc. “They were phenomenal,” say the homeowners. “We gave them the blueprints of the house and they put the cabinet design on a television and when we wanted something changed they changed it.” Lighting is from The Lighting Boutique and Appliance Shoppe.

Continued on page 42

THE TECH

“A lot went into it,” agrees **Dave Cartier** of **APW Custom Home Theatres**. “Our job was to integrate everything, including every single light, accent light, fixture, rope lighting, the motorized shade controls (which are programmed to automatically rise and lower as the sun makes its way over the home), as well as the audio/video systems. We especially wanted the entertainment systems to come together in an easy-to-use system for the client. We wanted to take away all the complexity from the client’s perspective and blend it all into one. The technical level on this home is way up there. For example, the art above the fireplace in the living room is not really art. It is a screen concealer and was custom built for this customer. The installation had to be coordinated between APW and the craftsmen on the fireplace so that it fit perfectly. These clients were excellent to work with,” Dave agrees. “We’ve done multiple projects together and it’s always been a fantastic experience.”

The homeowners couldn’t be happier. “The automation was very important to us because as we get more senior we want the security of knowing things like the fireplace will shut off automatically. APW was just outstanding and they continue to work with us.”

Continued on page 44

The beautiful art above the fireplace camouflages the television.



ABOVE: The multi-coffered ceiling in the family room and built-in cabinetry is an example of the quality of work and attention to detail that abounds throughout the home. The fireplace is from Forest Glade Fireplaces. The crushed marble surround is by Puglia Mouldings & Plasterwork Ltd. **FAR LEFT:** The master bedroom en suite has a walk-in shower that is both generous, and, in a unique touch, flush to the floor. **LEFT:** The master bedroom has calming views onto the protected green space behind the home.

It’s that time of year again, Fall is just around the corner!

Did you know that in addition to cleaning your gutters we also install gutter guards?

We install weatherproof aluminum gutter guards that will not rust, crack, chip or warp.

40 year clog-free warranty!

Leaves and debris remain out of rain gutters so they can function at all times.

CALL NOW
1.800.777.KILT

 **FREE ESTIMATE**
MEN IN KILTS
meninkilts.com
We Clean. You Enjoy. No Peeking!



Our home is truly unique. – it’s everything we hoped it would be! - *The Jones family*




PHILIP FERNANDES
CUSTOM RESIDENTIAL DESIGN

519.990.9115
pfernandesdesigns.com



NANCY JOHNS
GALLERY & FRAMING

WWW.NANCYJOHNS.COM
4755 Wyandotte St. E, Windsor, ON | 519.945.2222



CELEBRATING
100th
Anniversary
1918 - 2018

THANK YOU!
WINDSOR-ESSEX COUNTY

The Windsor-Essex County Association of REALTORS® will celebrate its 100th Anniversary in April. For a century, members and the Association have played an integral role in our community. Our 950 plus REALTORS® would like to SAY thank you!

www.windsorrealestate.com

THE LANDSCAPE

Because the homeowners enjoy gardening, they wanted, whenever possible, to take care of the grounds themselves. They enlisted **Henry Kroeker of H. Kroeker Lawn Care & Landscaping** to design a garden that would be both beautiful and easy-care. “We were very happy with how the landscaping turned out,” they say. “From initial design to final plantings and grooming, Henry and his crew worked extremely hard. We really appreciated their diligence, their work ethic and their willingness to accommodate our wishes.”

BELOW: The porcelain tiles and the travertine marble in the covered terrace were imported from Turkey and installed by Gabriele Home Furnishings & Flooring. Legend has it that the hand-hewn beam on the fireplace is where Joe Louis hung his boxing bag. You can still see the notch in the centre. The barn board ceiling is from Junk Whisperer in Staples.



The slate-like roof is actually rubber. It comes with a 50-year warranty and is from Heritage Roofing Inc.



THE CELEBRATION

Despite its grandeur, the house is every inch a home. This fall, the couple will host wedding celebrations when their younger daughter gets married. Then, the homeowners, who met in 10th grade, will celebrate their 50th wedding anniversary. Children and grandchildren are forever dropping by. “We wanted it to be a lived-in home,” they stress. “Not a show place.”

And, because they couldn't be more thrilled with the way their team pulled together to make their forever home a reality, all the celebrations wouldn't be complete without one more party – the one they plan to throw in honour of all the contractors and trades who worked so hard to make their dream come true. **OH**



“Henry Kroeker and his team are the hardest working people on the planet,” say the homeowners.

SOURCE GUIDE

- APW Custom Home Theatres
- Coghill Construction & Woodworking
- DH&C Mechanical
- Forest Glade Fireplaces
- Frank's Painting and Decorating
- Gabriele Home Furnishings & Flooring
- GCW Custom Kitchens and Cabinetry Inc.
- H. Kroeker Lawn Care & Landscaping
- Heritage Roofing Inc.
- Humphreys Electrical Contracting Ltd.
- Junk Whisperer
- Philip Fernandes Custom Residential Design
- Pillar Masonry
- Puglia Mouldings Ltd.
- Tiedeman Construction
- Wuerch Plastering & Drywall



The convenience of gas... without the glass.

The first gas fireplace without a glass front that also terminates horizontally for the best view of the fire puts the **Heat & Glo Phoenix** in a category all its own.

Add Bluetooth® speakers, an automatic damper to keep cold air out, and the same clearances as direct vent gas fireplace for a quicker, easier install that saves time and money, and you've got a game changer.

Visit our showrooms today to learn about the revolutionary **PHOENIX**.

HEAT & GLO
No one builds a better fire

FOREST GLADE
FIREPLACES
WINDSOR | 519-735-2229
forestgladefireplaces.com

LIFE STYLES
BY THE FIRE BOX
LEAMINGTON | 519-326-8585

Larry Pickle
ABR, Sales Representative

“Today's market demands a hard-working professional. My no-nonsense work ethic will get you moving. Call me first!”

direct: 519.791.9091

RE/MAX
Preferred Realty Ltd., Brokerage
Independently Owned and Operated.

www.larrypickle.com



Dream Home in Lasalle...



Brand new model from Sunset Luxury Homes in prime Lasalle. This 2 storey home offers immediate possession in sought after Lasalle location steps to the trails, close to all conveniences, schools, U.S. border on a quiet crescent street. This bright open floor plan offers vaulted and detailed ceilings, approx. 2729 sq ft. 4 bedrooms, 2.5 baths (master w/walk-in and luxurious ensuite), 2 car garage, covered porch on ideal lot surrounded by beautiful homes. Hardwood, ceramic, granite, quartz, appliances included! Quality construction by Sunset Luxury Homes. **Asking \$729,900**

Tina Pickle

Mark Eugeni

Donna Eugeni

The Legal Edge Team

2017 #1 Sales Agent 12 Years in a Row! 2006, 2007, 2008, 2009, 2010, 2011, 2012, 2013, 2014, 2015, 2016 & 2017

Mark & Tina at Manor Windsor Realty Ltd. Brokerage, 3276 Walker Road, Windsor, 519.250.8800

Mark A. Eugeni* | 519.796.8454 | sales@markeugeni.com | www.markeugeni.com – Tina Pickle* | 519.791.6626 | sales@tinapickle.com | www.tinapickle.com



Sales Representative

Not intended to solicit any properties currently for sale and all buyers and sellers are advised to obtain independent advice before relying on any information herein.

» SOURCE IT

THE NEW, NEAT, UNIQUE, AND FABULOUS IN WINDSOR & ESSEX COUNTY



MANZ DÉCOR: THE COLOURFUL ROOTS THAT MAKE TODAY'S STORE OF THE FUTURE

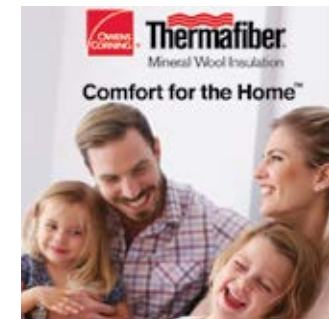
A colourful past is what keeps **Manz Décor** thriving. Having been a staple to the Riverside community for over 50 years, original owner Steve Manz's mission was to provide superb quality products paired with a personalized experience from staff that were friendly, knowledgeable and passionate about design.

The Batten Family sustains Manz core values today through their dedication to providing the same small business feeling that the Riverside community cherishes while managing commercial and domestic decorating projects throughout Windsor and Essex County.

While exceeding the requirements set by Benjamin Moore as a "Store of the Future" may seem like a vast accomplishment, the completely updated store also provides customers access to superior services such as customized in-home colour consultations, colour palette selection, and design advice that extends all the way from selection to placement. For those who prefer the do-it-yourself approach, the store offers an extensive collection of sundries, wallpaper, Hunter Douglas window treatments, furniture and home décor accessories.

Whether you are an Interior Design professional, or a weekend project warrior, Manz Décor is here to share advice, experience and passion to inspire you to create the beauty you need for your space. Please come visit us. **manzdecor.com**

(Please see ad on pg 9)



THERMAFIBER: PROVIDING COMFORT FOR THE HOME

NEW Owens Corning Thermafiber® Mineral Wool Insulation provides fire resistant, thermal and acoustical solutions, perfect for residential new build and home renovation projects.

Thermafiber® residential mineral wool blankets are ideal for insulating walls, floor/ceilings, and attic spaces in homes. These products provide a high R-value/inch, excellent sound attenuation characteristics and outstanding fire performance. Products are also inorganic, non-combustible, and mould resistant. Thermafiber® products conserve energy and provide a minimum 70% pre-consumer recycled content.

Why choose Thermafiber® Mineral Wool Insulation?

- Fire resistant to temperatures above 1,093° C (2,000° F)
- Minimum 70% recycled content
- Easy to cut and install
- Secure cavity fit
- Mould resistant

Thermafiber® UltraBatt™ mineral wool insulation also makes homes energy efficient and Thermafiber® Fire & Sound Guard™ insulation is designed to provide enhanced acoustical control plus fire resistance all in one product. Ask for these products by name and enjoy the comfort.

To learn more about Thermafiber® Mineral Wool Insulation visit **thermafiber.ca**

(Please see ad on pg 7)

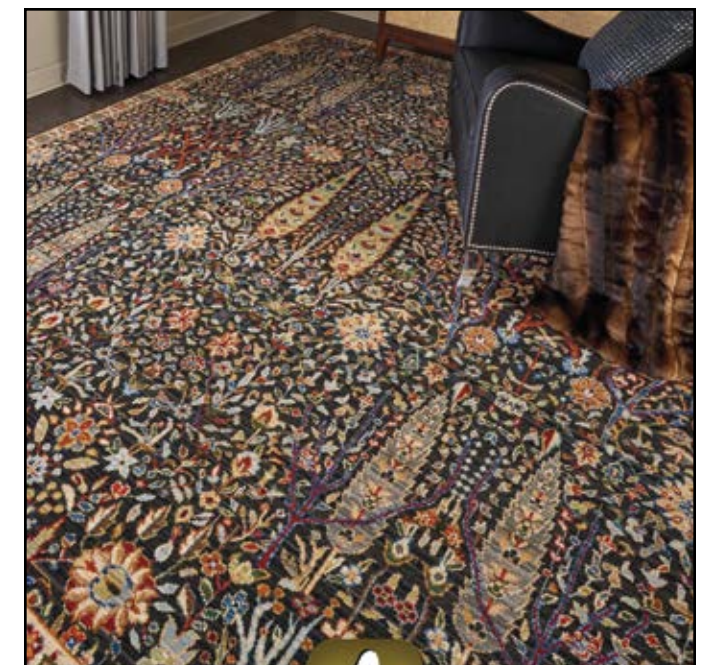
It's time.
Visit Beddazzle.

Sleep well.



Duvets, Blankets,
Pillows and so
much more.

13158 Tecumseh Rd. E.
519-735-3435



Palazzi
Oriental Rugs Inc.

3616 Walker Rd. | Windsor, ON | 519-972-7174

www.palazzirugs.com

ring of FIRE



PHOTOS: REGENCY FIREPLACE PRODUCTS

Extend your living space to the outdoors. A fire table creates warmth and ambience outside.



STORY **MELANIE REKOLA**

FIRE IS FASCINATING. Our human ancestors used fire to stay warm, cook food and keep predators at bay. It is also believed that human socialization began while huddled around the hearth. Adding cosy warmth and ambience to modern-day al fresco areas, the outdoor fireplace often serves as a design anchor at the centre of an outdoor living space. The fire also offers a place where people can relax and unwind together even when there's a chill in the air.

Here's a primer on how to bring fire and style to your outdoor space.

SELECT A STYLE

Freestanding Fireplaces: Adding a more formal or modern touch, these large, built-in fireplaces are simply gorgeous. They also offer opportunity for trendy, integral wood storage boxes, hearths, mantels and sometimes even a spot for an outdoor television. Some prefabricated models are offered but most often these are custom built and faced using a wide range of natural and/or manmade materials, including brick veneer and natural stone. Typical chimney and venting requirements for wood-burning units are dictated by strict local building regulation, making natural gas the fuel of choice due to less stringent zoning requirements. As with most things custom-made, freestanding fireplaces often come with a hefty price tag.

Fire Pits: The original open fire feature, these range wildly in design and price tag. They can be pre-fab or custom, simple or extravagant. At their most basic, a humble campfire dug into the ground and lined with stone boulders might work for some, while others may choose a high-end, custom fire feature that doubles as a dining table.



PHOTO: DEKKO

Propane: Also quick and efficient, propane fire features are great for those impromptu mid-week date nights or quick drinks with friends. Yes, this fuel source is costly but

Natural Gas: Natural gas is a quick way to enjoy a fireside evening. They are user-friendly, easy to maintain and offer a good heat source so long as they are rated at the proper output. Unfortunately they can be expensive to run and often the fire light is barely detectible until the sun is completely out of sight.

Wood: Wood burning fireplaces look and smell like a real campfire. To some, the odour part can be looked at as either a pro or a con! They give off lots of toe-warming heat and their fire light is nice and bright. On the negative side it takes time to build and prepare a roaring fire. They can be messy and sometimes require extra cleaning and maintenance. Wood burning fire features are also dictated by stringent local guidelines and some residential areas don't allow them at all. Yearly permits may also apply.

Fire Tables: Perfect for tight spaces and easy on the bank account, fire tables are all the rage. Often fueled by propane and available in an assortment of styles, they are brilliant in the sense that they are also moveable, meaning you can also take them with you when you move.

PICK A FUEL

on the flip side the firelight is quite obvious even during daytime hours. Though they do give off some heat, they are more for ambience rather than actual heating. They also can be a bit smelly.

Gel Fuel: Clean burning with no smoke and very little odour, these also require no ventilation and can be placed anywhere. Though they offer real flames, there is not much associated heat.

PLAYING WITH FIRE

Fire – though very beautiful – can be very dangerous and precautionary measures must be addressed. Never place a fire feature too close to a wall or other combustible surfaces or on a raw wooden deck. Fireproof surfaces are best for placement and include stone, concrete or tile. Be vigilant to situate them away from overhead tree branches as over time this will damage the tree and could also start a fire.

Interestingly, science suggests that the mesmerizing flicker of the television is very similar to the flicker of firelight and is likely one of the reasons why TV is so addictive. Knowing this, perhaps you'll choose to sit outside and enjoy some thought-provoking conversations alongside the fire more often. **OH**

Fire tables are brilliant – they can be used where space is limited, and you can take them with you if you move.



WINDSOR AND ESSEX COUNTY'S CHOICE FOR
QUALITY RESIDENTIAL LANDSCAPE
DESIGN AND CONSTRUCTION

BUILDING BEAUTIFUL LANDSCAPES
FOR PROUD HOMEOWNERS

3110 Jefferson Blvd., Windsor, **519 974 2000**
lakeshorelandscapingwindsor.com

**A Creative Team assuring
modern ideas and proven results**



Ryan Pawluk Andrea Pawluk Matthew Pawluk

BUSINESS ALL-STARS

PHOTOGRAPHY
MAX WEDGE



In our final issue of 2018 we wrap up our year-long tribute to some of our outstanding advertising partners with a look at two exceptional businesses. From real estate to fireplaces, these superstars share the secrets to their success.

TINA PICKLE & MARK EUGENI
The Legal Edge Team
Manor Windsor Realty Ltd., Brokerage

10-year milestones: We are making a conscious effort to focus more on the moment and less on the distant future. More importantly, each day is filled with successes and joys, which are all milestones that we are happy and thankful for. As for work, we are grateful for all of our clients and the trust they continue to instill upon us every year.

Success secrets: Teamwork, honesty, integrity and enjoying what we do! And maintaining a balance between work, family, friends and enjoying life, which includes riding our bikes!

What's in store for 2019? For our family, friends and clients we hope for continued health, happiness and prosperity. As for the real estate market, it appears that with current interest rates and inventory, it will be business as usual, which is great for the city. We are happy to see Windsor alive and thriving.



A.J. GODWIN & EMILE ANHORN
Scotts Fireplace

10-year milestones: We have continued to grow our business and feel we continually seek out ways to better service our customers.

Success secrets: We have great staff who focus on customers' needs and treat them like people not dollar signs. Putting customers first and staying in the forefront of the industry with our products and service is our secret to success.

What's in store for 2019? We'll continue to grow and adapt to the latest trends so we can provide the best selection and service possible. Come see our showroom renovation! Lots of great displays and lots of new products to help customers visualize how a model will look in their space. As we are finding that more and more people are making their fireplace the focal point of their home, being able to provide inspiring, design-forward displays is important to us. And, of course, we never lose sight of our number one priority: customer service. **OH**

SEE OUR DIRECTORY FOR ALL CONTACT INFORMATION.

EPOXY FLOORING FOR YOUR BASEMENTS & GARAGES

BEST FLOORING OPTION OUT THERE

- Concrete & crack repair
- Long lasting finish & easy to clean
- Low maintenance
- Water Resistant
- 100's of beautiful finishes to choose from
- Best for wear & tear



BASEMENT



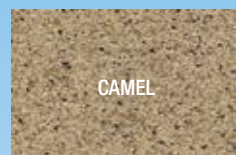
GARAGE



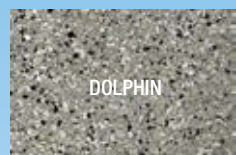
BASEMENT



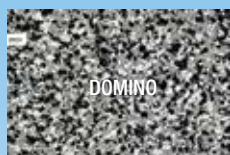
GARAGE



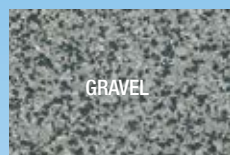
CAMEL



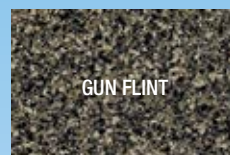
DOLPHIN



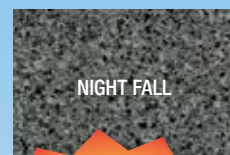
DOMINO



GRAVEL



GUN FLINT



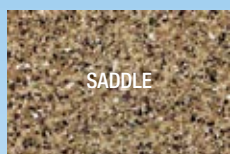
NIGHT FALL



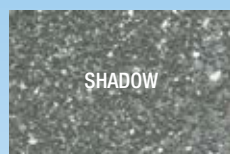
RAVEN



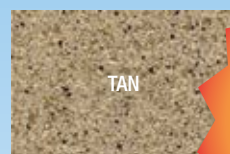
SABLE



SADDLE



SHADOW



TAN

OVER 10 COLOURS TO CHOOSE FROM

Call for a **FREE** no obligation estimate.

519.990.5460

www.thenulook.ca

f NULOOK WINDSOR

100's of custom colours also available. Stop in & check out our selection.



NULOOK EPOXY

Windsor's Only Epoxy Flooring Showroom

Monday - Friday 10 am - 5 pm

Saturday & after hours by appointment.

3215 Jefferson Blvd. Windsor

REPLACING YOUR BASEMENT FLOOR?

Check out the best water-resistant floor out there!



Before



After



EPOXY FLOORING - Your best choice!

Older floors have a tendency to be uneven and our product will self-level those surfaces. Epoxy is extremely durable and easy to clean because of the seamless finish which means no yearly upkeep is necessary. This product is water resistant so never worry about flooding or spilling liquid on the floor again! Even water-proof laminate flooring still has to be removed if flooded for too long. This slip resistant finish comes in hundreds of different styles and colours.

Give us a call today or stop in our showroom and find out what we can do for you!

good taste

Coffee TONIC

Don't wait for this coffee trend to hit your local spot. The Coffee Tonic is refreshing and light, while still delivering your daily dose of caffeine. The idea originates in Sweden, yet has made noise throughout many large cities, and now in your own kitchen.

RECIPE AND PHOTOGRAPHY
JENELLE MCCULLOCH



INGREDIENTS

Ice

Tonic water

Espresso or cold
brew coffee

Garnish: Citrus fruits
and rosemary sprig or
maraschino cherries and
pomegranate syrup

DIRECTIONS

Fill a glass with ice and top
with tonic water until about
an inch from the rim.

Slowly pour in espresso or
cold brew coffee so that it
floats on top.

Serve with a squeeze of
fresh citrus and a sprig of
rosemary to brighten it up.
Or, for a deeper complexity,
garnish with maraschino
cherries and pomegranate
syrup. **OH**

online

Get more recipes at ourhomes.ca/mag/cook



4072 Walker Rd., Windsor
519.969.0152
theapplianceshoppe.com

THE **APPLIANCE**
SHOPPE
YOUR HOME STARTS HERE

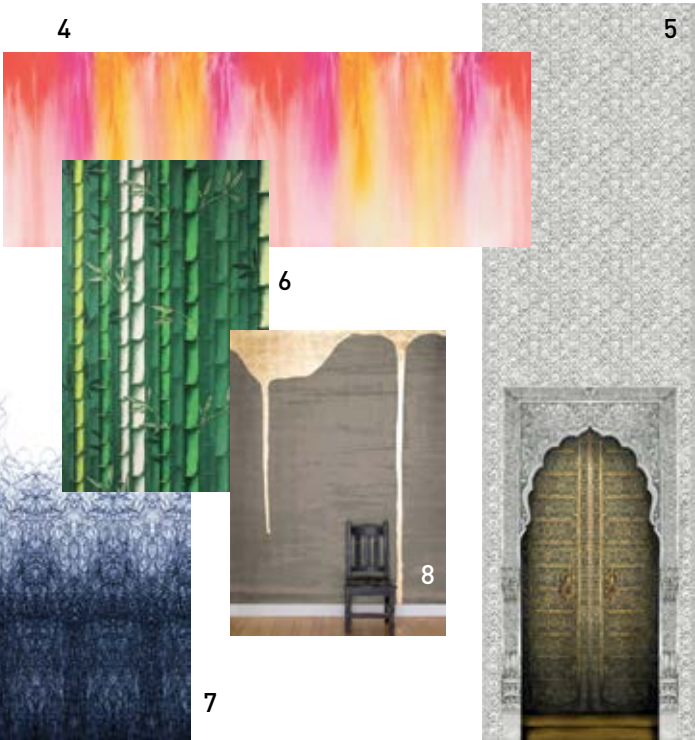


10 WAYS TO GO BIG



STORY **YANIC SIMARD**

In interior design, choosing the right scale is always important – and sometimes bigger really is better! Here are my top 10 ways in the home to consider going BIG with your décor choices to create a strong statement and a generous sense of luxury.



Light Fixtures

Oversize lights add big drama and character to elevate the look of an entire space. This is especially true when you mix the scale of a grand chandelier with a modern shape to create an unexpected effect.

1 For a sense of balance, try a large pendant fixture with an airy form that includes a lot of clear glass or negative space, like an angular fixture. The silhouette is can't-miss-it big, but the look isn't overwhelming.

2 Floor lamps with a 24-inch shade or larger match the scale of a large piece of furniture like a bed or sofa, giving the whole grouping a sense of weight. Using simple drum or cone shades in a solid neutral colour makes sure the look is strong but not too heavy.

1. ZANEEN: 39-inch Willy 100 Suspension Light in Black **2. TROY LIGHTING:** Uni in Tide Pool Bronze **3. MOOOI:** Random Light in White

Patterns & Papers

In the digital era the options for patterns and even custom prints are virtually endless. Rather than playing it safe, consider using a paper or wallcovering with a large-scale pattern, one that you can see without having to stare at a wall up close.

3 Love a wallpaper with a large print but don't want to overwhelm the room? Such a wall covering is perfect for a single accent wall, paired with neutral paint for the remaining, creating a dramatic focal point in a balanced way.

4 When choosing a large-scale print for wall coverings, look for ones with light backgrounds that can be matched to a nearby wall colour. This helps create a seamless effect and a sense of depth, which avoids visually shrinking the room.

4. ROLLOUT: Colourinky Wallpaper **5. COLE & SON:** Bahia Wallpaper **6. OSBORNE & LITTLE:** Bamboo W7025-01 Wallpaper **7. ROLLOUT:** Ballpoint Pen Wallpaper **8. CALICO WALLPAPER:** Satori Mountain Wallpaper

Seating

Seating is definitely an area where quality should not be ignored for the sake of quantity. It is often better to have fewer bar stools or dining chairs in a generous size that people will truly want to use.

5 Regardless of the size of the seat you choose, a person needs 24 to 30 inches of width to dine comfortably. Choosing wide seats (24 inches or more) ensures each guest has enough space reserved, while giving your island or table a rich, filled-in look.

6 In a living or family room, use a wide, plush sectional sofa to create a comfortable environment for day-to-day lounging. Even in a small space, a large sofa will make a room feel grand, and you'll be able to fit in a few extra guests when entertaining.



9. CB2: Reynolds Navy Velvet Chair **10. ARTERIORS:** Calvin Bar Stool **11. KORSON FURNITURE DESIGN:** Obax Tub Chair

Art & Mirrors

Scale is never more important than when talking about wall art – after all, it's hard to make a statement if you can't even see the piece.

7 Gallery walls have been a trend for nearly a decade, and they have their place, but there's also a beautiful simplicity to a singular large-scale canvas or photo print. Choose a piece that takes up at least 60 per cent of the available wall height to make a grand statement and a true focal point.

8 To capture the eye and also double the apparent size of the space, choose an oversize mirror hung prominently on the wall. A circular shape will add some softness to the room, perfect for a bedroom, living room or dressing suite.



A large pendant fixture with an airy form, like the angular fixture used in this transitional kitchen, gives a sense of balance.

A large scale makes your island a standout visual feature as well as a central hub.

Kitchen Islands

With eat-in kitchens being ever more popular, many are choosing islands much deeper than the typical 30 to 42 inches. A large scale makes your island a standout visual feature as well as a central hub.

9 To allow for both diners and a home chef to coexist in harmony, consider an island that's 48- to 60-inches deep, with seating on two or three sides to allow for natural conversation. With a truly comfortable island, you might not need a separate breakfast nook at all.

10 To suit the scale of a feature island, consider a marble or quartz counter with rich veining. Keep in mind that large-scale veins won't show well on a small sample, so you'll want to visit a quality showroom to see larger slabs and get the full picture. **OH**

The Legal Edge Team

"Over the past 17 years we have worked with Mark, Tina and the Team three different times. Different homes, different markets, but always the same quality of service. We have come to know them as genuine in their interactions, knowledgeable in their guidance and extremely personable in every aspect. Both buying and selling a home can be a very intimidating process. Whether it's property research, evaluating inspection reports or negotiating on our behalf, they have always proven their commitment and expertise. Having always understood our position and taken the extra time to provide clarity prior to any decision making. We are extremely comfortable working with Mark, Tina and the Team and will certainly look to them again when the opportunity arises."

Leah and Steve Beneteau



Emerson, Avery, Anson,
Steve & Leah Beneteau

2017 #1 SALES AGENT 12 YEARS IN A ROW

2006, 2007, 2008, 2009, 2010, 2011,
2012, 2013, 2014, 2015, 2016 & 2017

Whether **BUYING** or **SELLING**, put your trust in the legal knowledge of a lawyer, the success of a complete marketing campaign and the benefits of a professional sales team.



Selling Windsor...
Beyond Expectations
519.250.8800

Mark A. Eugeni, B. Comm., MBA, JD
Sales Representative
mobile: 519.796.8454
sales@markeugeni.com
www.markeugeni.com

Tina Pickle
Sales Representative
mobile: 519.791.6626
sales@tinapickle.com
www.tinapickle.com

* Sales Representative



Visit us in our
NEW LOCATION
at 3545 Walker Rd.



PHOENIX
Home

519.945.2001 phandgarden@cogeco.net shopphoenixhome.com

directory

OUR HOMES attracts the area's finest businesses to advertise in our pages, and utilize our unparalleled distribution and coffee-table appeal to market their products and services. We're making it easier for you, our readers, to become educated as you plan your home- and real estate-related purchasing decisions. View these business ads online at ourhomes.ca/windsor. The listings below are organized alphabetically by industry.

APPLIANCES

The Appliance Shoppe, 55

ARCHITECTS/ARCHITECTURAL DESIGN

ADG Architects Inc., 10

Philip Fernandes Custom Residential Design, 43

ART/ARTISANS/GALLERIES

Nancy Johns Gallery, 43

AUTOMOBILE SALES & SERVICE

Subaru Canada, 4

AWNINGS/TENTS/SHELTERS

Made To Shade, 10

BBQ'S & GRILLS

Forest Glade Fireplaces, 45

BED & BATH

Beddazzle, 47

CARPET/TILE/UPHOLSTERY CLEANING

NuLook Cleaning & Repair Specialists, 14
Palazzi Rugs, 47

CLEANING

Men In Kilts, 43

COUNTERTOPS/CONCRETE/ GRANITE/STONE

Bay-View Glass & Mirror, 8
Palazzi Bros. Tile & Granite, 17

CUSTOM CABINETRY/DESIGN

Cremasco Fine Cabinetry, 13
FABU Kitchen & Bath, 35
Mastro Kitchen Studio, 19

CUSTOM FRAMING

Nancy Johns Gallery, 43

CUSTOM GLASS PRODUCTS

Bay-View Glass & Mirror, 8

CUSTOM HOME BUILDERS

Coulson Design Build, 3
Timberland Homes, 32&33

EPOXY FLOORING

NuLook Epoxy, 52&53

FINANCIAL/MORTGAGES/ INSURANCE

Tolmie Financial Group, 29

FIREPLACES & STOVES

Forest Glade Fireplaces, 45

FLOORING

Palazzi Bros. Tile & Granite, 17
Palazzi Rugs, 47

FURNITURE & HOME DÉCOR

Bertoni Chairs, 15
Lionheart Collection, 21, 29
Nancy Johns Gallery, 43
Phoenix Home & Garden, 59
Urban Home, 11, 61

INSULATION

Owens Corning, 7, 47

INTERIOR DESIGN/INTERIOR DECORATING/HOME STAGING

HouseWears, 37
Lionheart Collection, 21, 29
Urban Home, 11, 61

KITCHEN & BATH

Angileri Kitchen & Bath, 37
Bay-View Glass & Mirror, 8
Cremasco Fine Cabinetry, 13
FABU Kitchen & Bath, 35
Mastro Kitchen Studio, 19

LANDSCAPING/LAWN & GARDEN

Bellaire Landscaping, 2
Lakeshore Landscaping, 49
Landscape Effects, 63

LIGHTING

The Appliance Shoppe, 55

NEW HOME COMMUNITIES

Innovative Lifescapes, 15
Timberland Homes, 32&33
Valente Realty, 64

OUTDOOR FURNITURE

Bertoni Chairs, 15
Phoenix Home & Garden, 59
Urban Home, 11, 61

PAINTING & DECORATING

Benjamin Moore, 9
Decorating Ideas, 9
Manz Décor, 9, 47

POOLS & SPAS

The Great Outdoors, 6

REAL ESTATE

Manor Realty – Mark Eugeni, Tina Pickle
46, 58
ReMax Preferred Realty – Larry Pickle, 45
Valente Realty, 64

RUGS

Palazzi Rugs, 47

SPECIAL EVENTS

Urban Angel – Urban Home, 61

SPECIAL/NON-PROFIT ORGANIZATIONS

Transition To Betterness, 29
Windsor-Essex County Association
of Realtors, 43

SUNROOMS

Seaton Sunrooms, 37

WINDOW FASHIONS

Decorating Ideas, 9
Made To Shade, 10
Manz Décor, 9, 47

WINDOWS & DOORS

Martindale Window & Door, 21
The Planning Centre, 5

Urban Angel



*Spread the word...
We want to make that dream room a reality for someone special!*

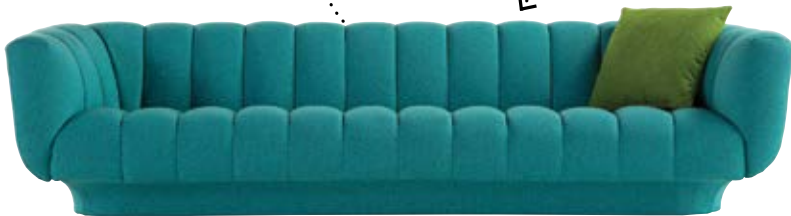
Submit a story about a child with an illness or special circumstance that you feel deserves a bedroom makeover. All entries are carefully considered by the Urban Home design team. They will receive a fresh bedroom makeover from Urban Home & the following community sponsors.

www.urbanhomewindsor.com/urban-angel

finishing touch



1 JONATHAN ADLER: Lampert Sofa in Venice Peacock



2 ROCHE BOBOIS: Odea Sofa in Sea Green



3 BRENTWOOD CLASSICS: Lunetta Sofa in Samira Red



4 STRUCTUBE: Emilie Velvet Sofa in Green



5 ELTE: Hunter Sofa



6 THE ART SHOPPE: Blush Sofa



7 NUEVO: Janis Sectional Sofa in Midnight Blue

8 MOOOI: Boutique Delft Blue Jumper OH



BOLD & beautiful

Make a statement in your favourite lounging space with a sofa in a bold colour.



it's your
TURN



LANDSCAPE EFFECTS
GROUP

ARCHITECTURE DESIGN LANDSCAPING

landscapefx.com

Our recent creation



MODEL SUITE NOW OPEN!

LaSalle's New Luxury Condominium Community

TOWNHOMES
NOW AVAILABLE
STARTING AT \$499,900!



5840 NEWMAN BLVD. BUILDING "A"

PHASE I- OVER 80% ALREADY SOLD! www.valentehomes.com

LUXURY 1 & 2 BEDROOM CONDOMINIUM SUITES

PURCHASE
FROM

\$264,900

LEASE
FROM

\$1,500 MONTHLY

Experience LaSalle's ultimate lifestyle when you view our stunning new model suite! Check out Valente's signature finishes including contemporary kitchen cabinetry, crown moulding, quartz countertops, luxury vinyl plank flooring, sparkling en-suite bathrooms with porcelain tile floor and shower. There has never been a better opportunity to enjoy a maintenance free lifestyle!



The Townhomes



Typical Master Bedroom



Typical two bedroom
kitchen/living room combo



A look at Outdoor covered terrace


VALENTE
DEVELOPMENT

WALK TO LOCAL AMENITIES:

- Grocery Stores
- Banks
- Medical and Pharmacy
- Restaurants
- Miles of walking and biking trails

SALES OFFICE LOCATION

5881 MALDEN ROAD
(BEHIND REXALL)

SALES OFFICE HOURS:

Tues. Weds, Thurs. 11-2:30pm
Sat. & Sun. 12-3pm
519.966.7777

DARCIE VALENTE • BRENDA HAWTIN

Sales Representatives

