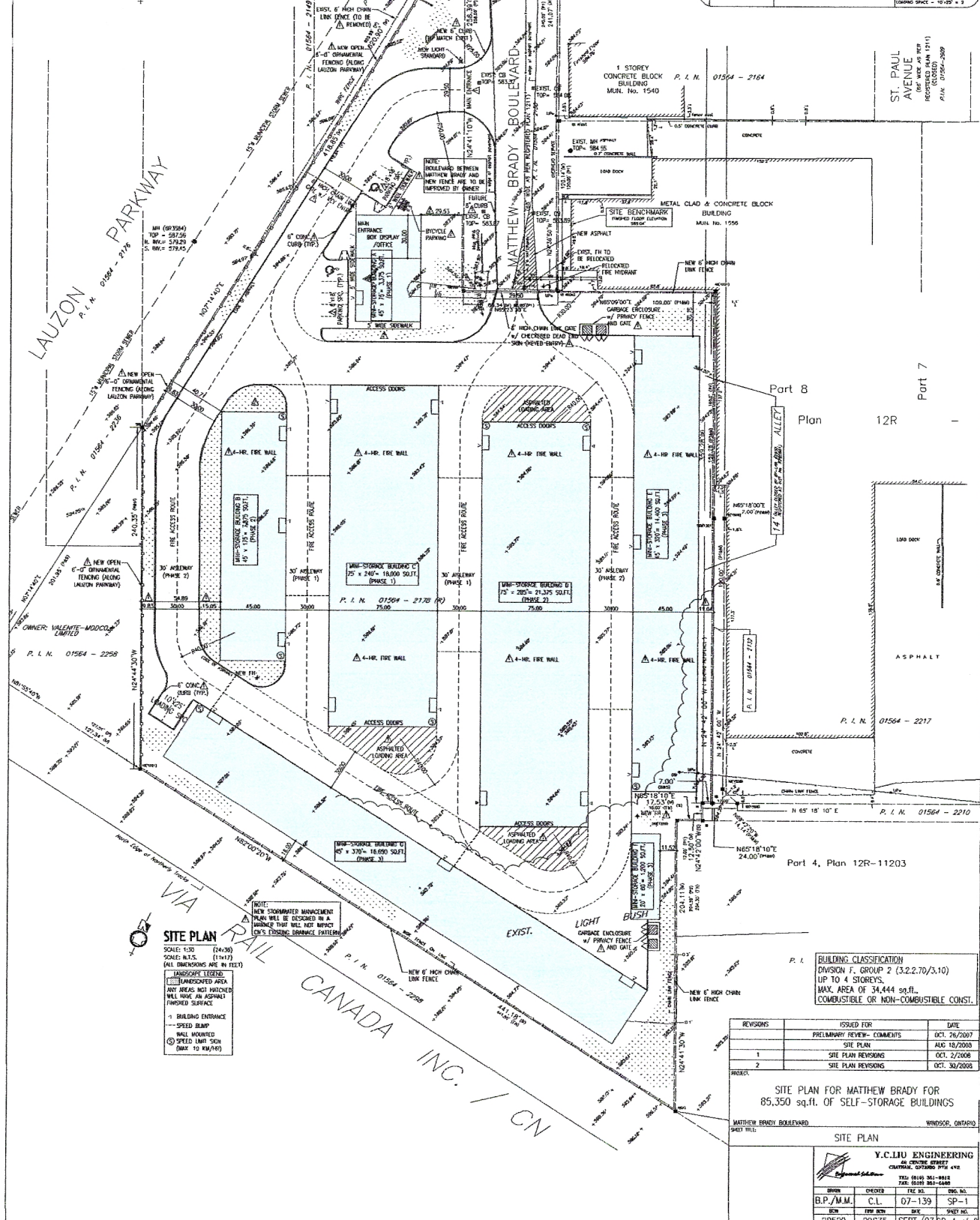


SITE MAP
NOT TO SCALE

Site Data

1. GROSS SITE AREA: 166,517.77 sq.ft.
 2. BRUSH AREA: 1,231 sq.ft.
 3. TOTAL AREA: 165,286.77 sq.ft.

NO.	DESCRIPTION	REQUIREMENTS	PROVIDED
1	PERMITTED AREA	CONFORMANCE WITH ZONING BY-LAW	100% (165,286.77 sq.ft.)
2	LOT FRONTAGE	N/A	N/A
3	LOT DEPTH	N/A	N/A
4	LOT AREA	N/A	N/A
5	SETBACKS	N/A	N/A
6	HEIGHT	N/A	N/A
7	UTILITIES	N/A	N/A
8	ADJACENT PROPERTIES	N/A	N/A
9	ADJACENT ROADS	N/A	N/A
10	ADJACENT UTILITIES	N/A	N/A
11	ADJACENT ZONING	N/A	N/A
12	ADJACENT DEVELOPMENT	N/A	N/A
13	ADJACENT LANDSCAPE	N/A	N/A
14	ADJACENT ENVIRONMENT	N/A	N/A
15	ADJACENT INFRASTRUCTURE	N/A	N/A
16	ADJACENT SERVICES	N/A	N/A
17	ADJACENT UTILITIES	N/A	N/A



BUILDING CLASSIFICATION
 DIVISION F, GROUP 2 (3.2.2.70/3.10)
 UP TO 4 STOREYS.
 MAX. AREA OF 34,444 sq.ft.
 COMBUSTIBLE OR NON-COMBUSTIBLE CONST.

SITE PLAN
 SCALE: 1/32" = 1'-0"
 SCALE: N.T.S. (11x17)
 (ALL DIMENSIONS ARE IN FEET)

LEGEND:

- UNDEVELOPED AREA
- ANY AREAS NOT MATCHED WILL HAVE AN ASPHALT FINISHED SURFACE
- BUILDING ENTRANCE
- SPEED BUMP
- WALL BOUNDARY
- SPEED LIMIT SIGN (MAX TO 40 KM/HR)

REVISIONS	ISSUED FOR	DATE
1	PRELIMINARY REVIEW - COMMENTS	OCT. 26/2007
2	SITE PLAN REVISIONS	AUG. 18/2008
3	SITE PLAN REVISIONS	OCT. 2/2008
4	SITE PLAN REVISIONS	OCT. 30/2008

SITE PLAN FOR MATTHEW BRADY FOR 85,350 sq.ft. OF SELF-STORAGE BUILDINGS

Y.C.LIU ENGINEERING
 20529 29635 SEPT./07 SP-1 of 2